

KM-3650w

A0 MONOCHROME MULTIFUNCTIONAL

▶ print ▶ copy ▶ scan ▶ fax

AN **EASY-TO-USE** SOLUTION FOR YOUR
LARGE FORMAT DOCUMENT MANAGEMENT.

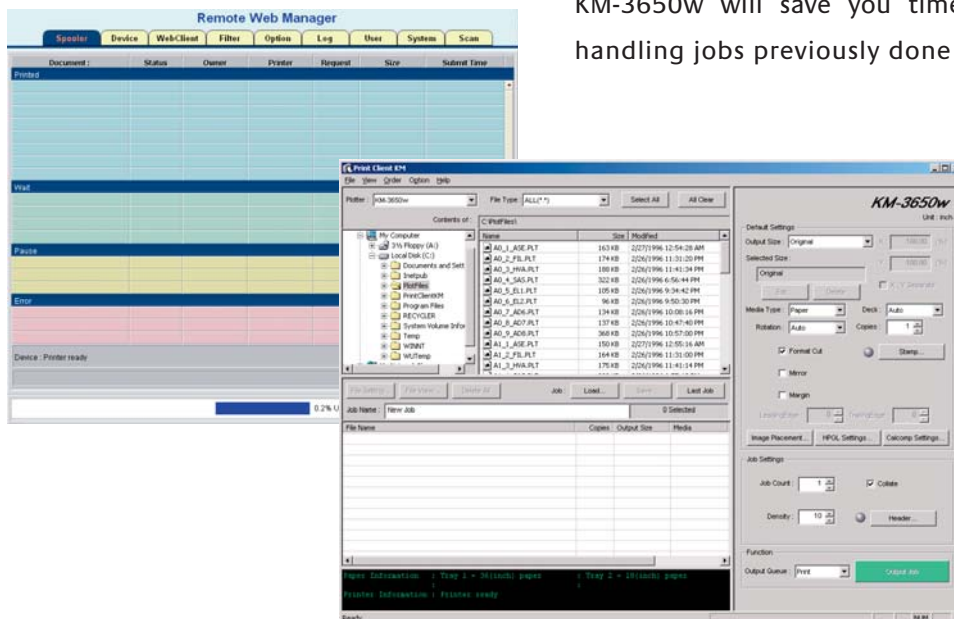


 **KYOCERA**

EVERYTHING YOU NEED IN A MINIMUM OF SPACE

INCREASE YOUR OFFICE'S EFFICIENCY

Sometimes, improving office efficiency can be as easy as buying a new printer. The KM-3650w is a highly capable network multifunctional that offers easy access from every workstation in your office. The simple-to-operate user interfaces let everyone in your office print and scan right from their workstation. Should you still be using a plotter and analogue wide-format copier, the KM-3650w will save you time and space, easily handling jobs previously done by two units.



A GREAT IDEA NEEDS A PRECISE PLAN

With a printing resolution of 600 x 600 dpi, the KM-3650w delivers crisp, concise printouts up to A0 – even if you have to resize the file. The optional scanner lets you make full use of this multifunctional's capabilities, giving you a wide format imaging system that can print, copy and scan. You get all the benefits of superior image quality from a single device in a minimum of space.

The KM-3650w is so compact and quiet that it can integrate seamlessly into any office. Offering a full range of solutions for your large format printing, copying and scanning needs up to A0, you will always find the KM-3650w easy to use, regardless of whether you are using the network printing functions or the large, conveniently placed operating screen. Not only is the day-to-day operation trouble-free, maintenance is just as easy so that you do not have to worry about down time. Take a closer look! You will see that this all-in-one device is a simple and highly efficient addition to your office.



User-friendly operation panel

The tilting operation panel is positioned for easy access, ensuring optimal operating comfort and avoiding reflection from overhead lights.

Face-up original feeding

Face-up feeding is a simple and effective way to prevent skewing and ensure precise scanning so that you always have a dust-free original.

Manual bypass

Should you need to use special media or if you are only making one quick copy, the manual bypass gives you fast and easy access.

Mono-component toner

Easy to replace and economical to use, mono-component toner ensures that no toner is wasted, making this system environmentally friendly.



Two roll capacity

With space for up to two rolls, using different sizes or switching from plain paper to transparencies is fast and easy.

Rear side output

Easily expandable to include a finishing unit for all in one printing/copying and folding.



KM-3650w

A0 MONOCHROME MULTIFUNCTIONAL

The KM-3650w incorporates extremely durable components that guarantee efficient and reliable operation. The system is designed to meet the demanding requirements of busy office environments. The KM-3650w provides effective productivity and maximises uptime whilst ensuring a minimum impact on the environment.

GENERAL

Technology: LED + indirect, electrostatic method
Engine speed: 4.3 (A1), 2.6 (A0) sheets per minute, 3.6 meters per minute
Resolution: 600 x 600 dpi (print/copy)
Time to first copy: 40 seconds (A1)
Time to first print: 24 seconds (A1)
Warm-up time: 300 seconds or less from power on, 120 seconds or less from low power mode
Power source: AC 220 ~ 240 V, 50 Hz
Power consumption: Copying/Printing: 1000 W or less, Ready mode: 500 W or less, Sleep/off mode: 65 W or less
Noise (ISO 7779/ISO 9296): Copying/Printing: 60 dB(A), Ready mode: 54 dB(A)
Dimensions (W x D x H): Main unit: 1260 x 600 x 1218 mm
Weight: Approx. 210 kg
Certifications: TÜV/GS, CISPR22 Class B
This product is manufactured according to ISO 9001 quality standard and ISO 14001 environmental standard.

PAPER HANDLING

Input capacity:
1 Roll + 1 sheet bypass: Max. 2 rolls + 1 sheet bypass
150 m/roll, paper roll width 279 ~ 914 mm, bypass paper width 279 ~ 914 mm, bypass paper length 210 ~ 1,219 mm, 64 to 80 g/m²
Output capacity: 10 sheets

COPY FUNCTIONS

Max. original size: 914 x 12,000 mm
Min. original size: 279 x 210 mm
Copy size: Max. 914 x 12,000 mm, min. 279 x 210 mm
Print size: Max. 914 x 24,000 mm, min. 279 x 210 mm
Continuous copying: 1-99
Memory capacity: Standard 512 MB and 80 GB HDD
Zoom range: 25-400% in 0.1% steps
Preset magnification ratios: 4R / 4E
Digital features: Paper type selection, interrupt copy, automatic drawer change, repeat copy, scan one copy many, application copy, rotation copy, mirror image, sort, group, background removal, date stamp, margin shift, border erase, sharpness

PRINT FUNCTIONS

Processor: Celeron D 2.6 GHz or more
Memory: Standard 512 MB and 80 GB HDD (shared with copy memory)
Emulations: HP-GL / HP-GL2 / HP-RTL
Calcomp 906 / 907
TIFF 6.0 (G3, G4)
CALS (G4), BMP, JPEG
Option: PDF
Printer driver: Windows® printer driver
OS: Windows® 2000, XP
Auto CAD HDI driver: Auto CAD 2000, 2000i, 2002, 2003, 2004, 2005, 2006
Printer utility: For client
OS: Windows® 2000, XP

INTERFACE

Standard interface: 10Base-T/100Base-TX

SCAN FUNCTIONS (OPTIONAL)

Functionality: Scan-to-PC/FTP
Scan speed: 4.2 (A1), 2.6 (A0) sheets per minute in 600 dpi, line mode, 5%
Scan resolution: 600, 400, 300, 200, 100 dpi
Maximum scan size: A0
Interface: 10Base-T/100Base-TX
File types: TIFF (G3, G4), CALS-G4, BMP, PDF, JPEG
Features: Scan to folder, density adjustment (7 steps), continuous scan, background removal, border erase, mirror image, scan + copy

OPTIONS

Roll unit (RU-5), Scan system 1, Third party folder / finisher

CONSUMABLES

TK-950 Toner-kit: Toner for 2,400 m with A0 width 5% coverage
Toner for 2,000 m with A0 width 6% coverage



Roll unit (RU-5)

Product depicted includes optional extras

Your Kyocera Business Partner:

pureprint®



CarbonNeutral® company

Printed by Beacon Press, a carbon neutral company, using proprietary pureprint® environmental print technology.

Kyocera Mita (UK) Ltd, 8 Beacontree Plaza, Gillette Way, READING RG2 0BS
Tel: 0118 931 1500, Fax: 0118 931 1108, email: info@kyoceramita.co.uk, www.kyoceramita.co.uk

Kyocera does not warrant that any specifications mentioned will be error-free. Specifications are subject to change without notice. Information is correct at time of going to press. All other brand and product names may be registered trademarks or trademarks of their respective holders and are hereby acknowledged.

 **KYOCERA**